

## Student Guide – Accessing Closed Captions on EchoVideo

Last reviewed: 21 July 2023

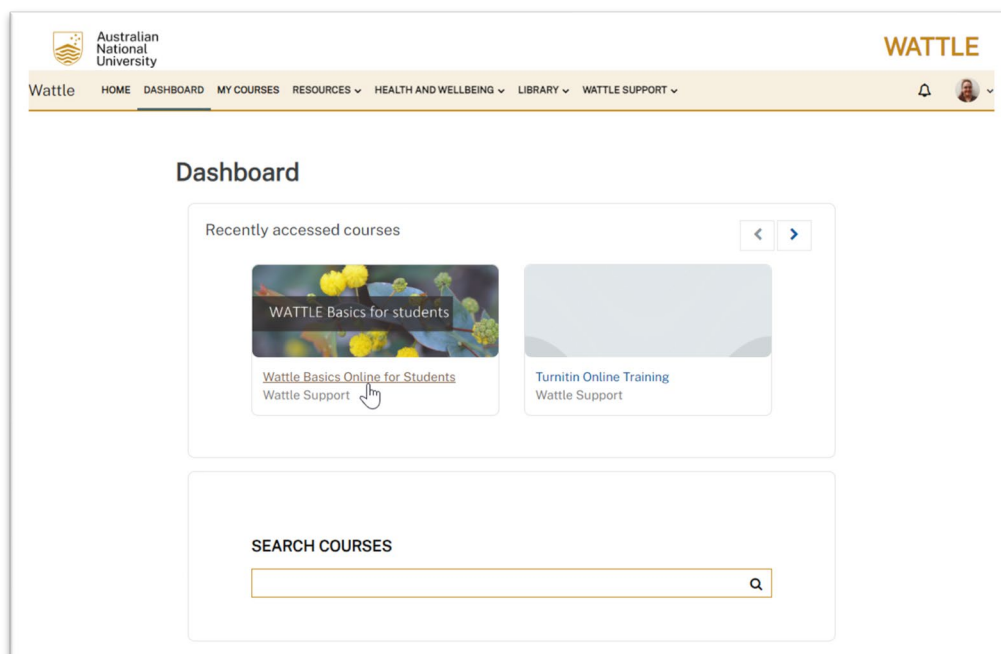
Automatic Speech Recognition (ASR) describes the technology that is used by EchoVideo to generate text-based transcripts for lecture recordings. When enabled and above the accuracy threshold, transcripts now automatically also generate closed captions (CC).

Note: Closed captions in EchoVideo will only be available for lectures recorded beginning Week 1, Semester 2, 2023, in courses which have ASR enabled and when the transcript generated meets the accuracy threshold.

### Accessing Closed Captions in EchoVideo

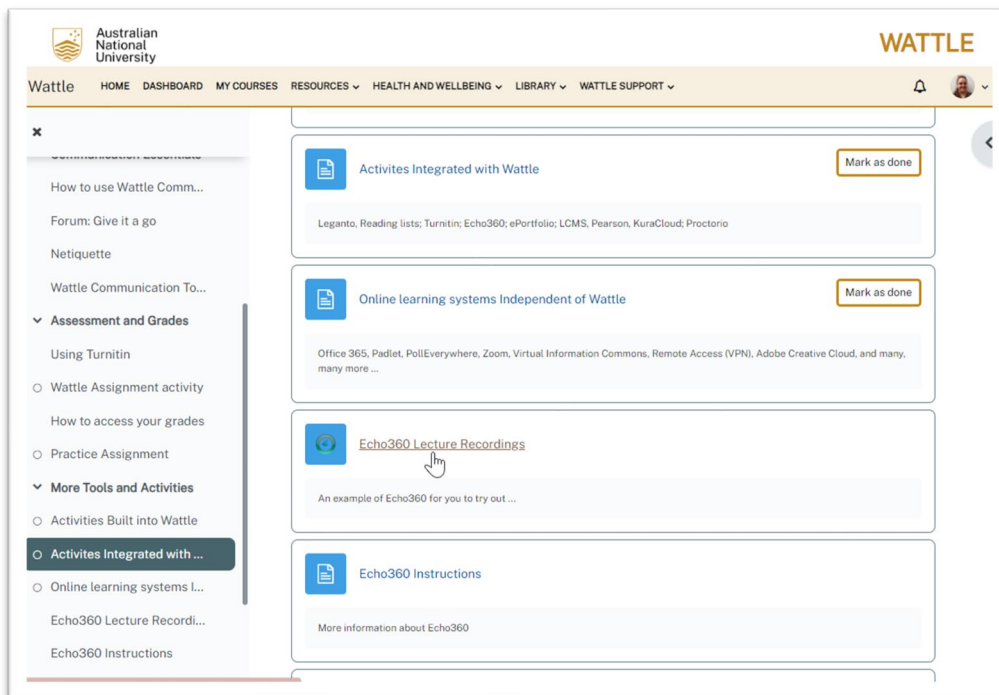
These instructions step through how to access closed captions in EchoVideo.

1. Log in to Wattle with your ANU UniID (u1234567).
2. Select the course from which you want to access lecture recordings.



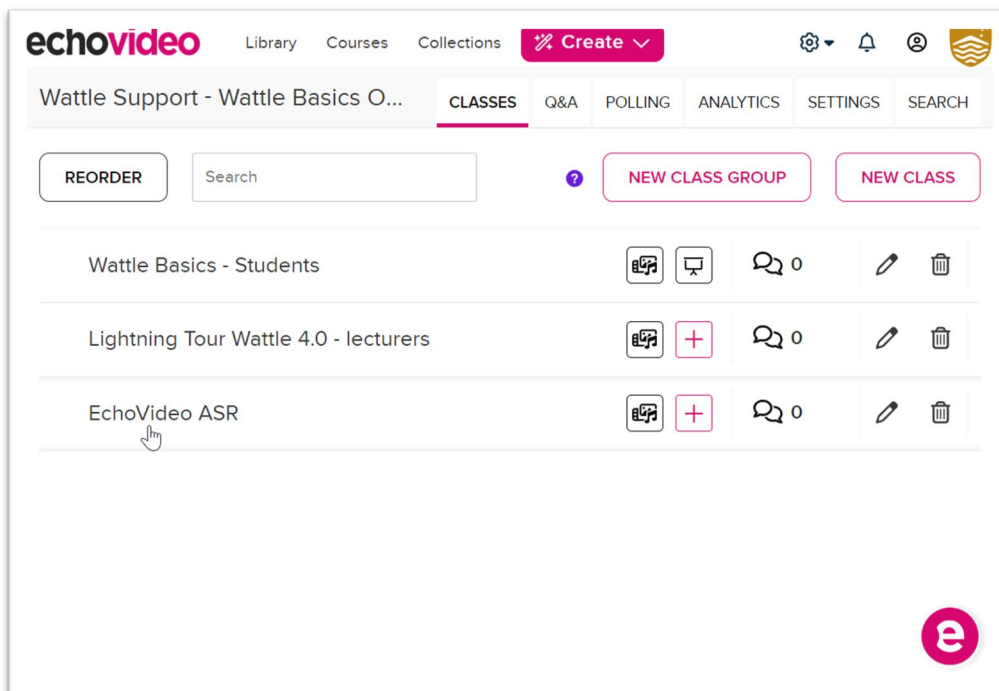
**Figure 1.** Screenshot of the Wattle dashboard with the cursor pointing to the Wattle Basics Online for Students Wattle course.

3. Locate the Echo360 activity in your course.



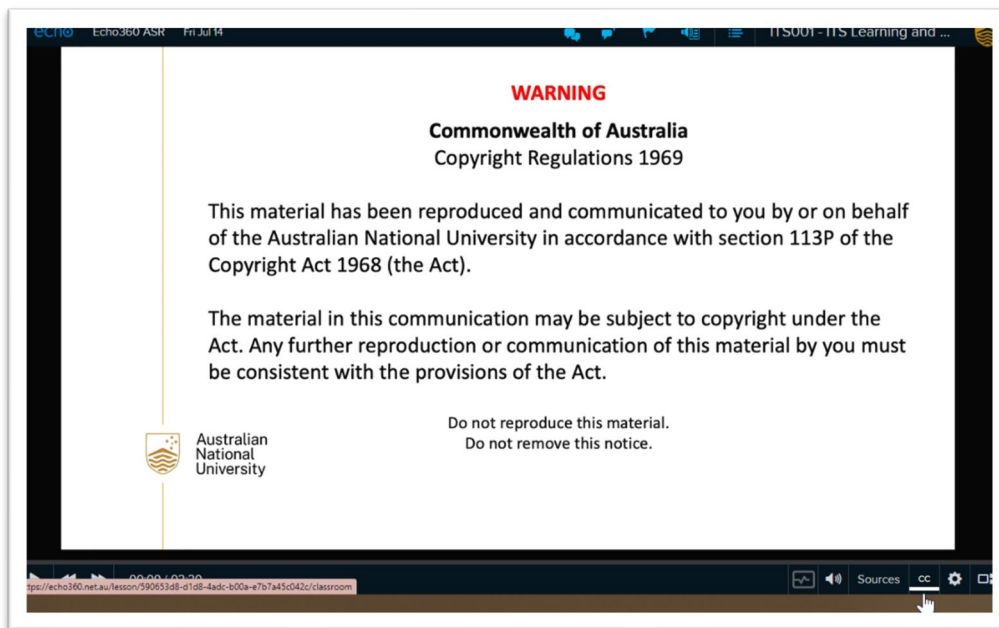
**Figure 2.** Screenshot of the Wattle dashboard with the cursor pointing the Echo360 activity link called Echo360 Lecture Recordings.

4. Select the lecture recording you want to watch.



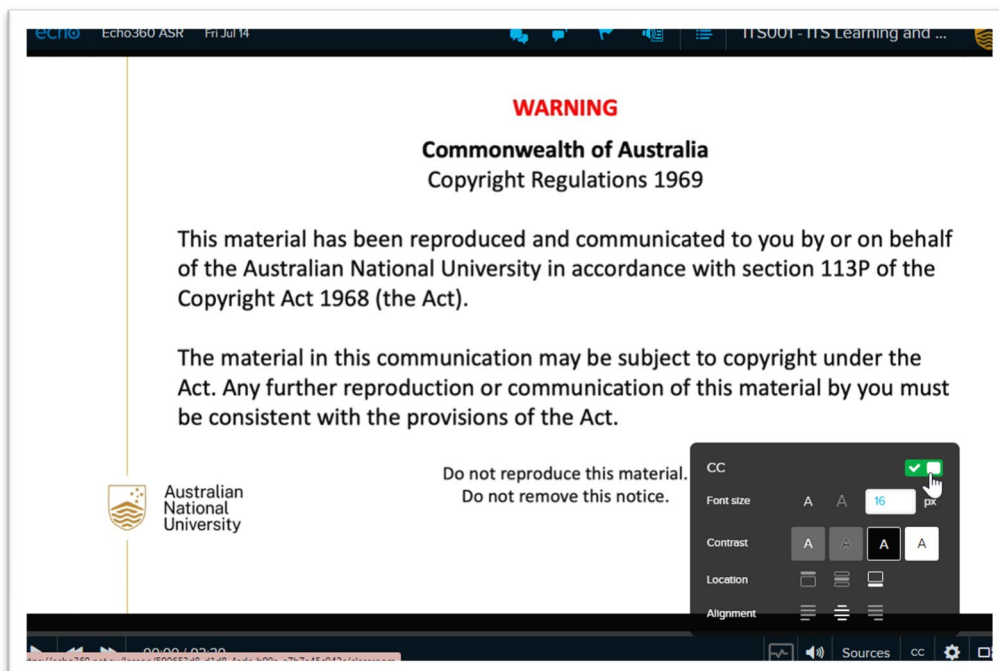
**Figure 3.** Screenshot of the EchoVideo dashboard with the cursor pointing to a class named "EchoVideo ASR".

5. Look for the caption button represented by a **CC** symbol.



**Figure 4.** Screenshot of the EchoVideo media player with the cursor pointing to the **CC** (closed captions) button.

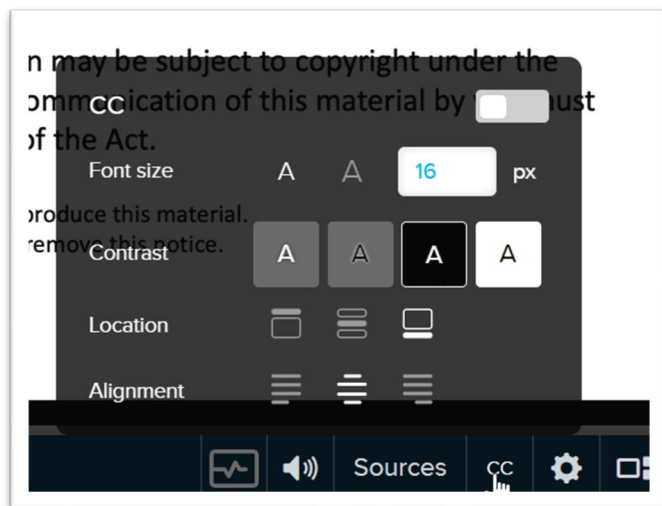
6. If the video has captions available, you'll see an option to enable them. Click on the **CC** switch to enable the captions.



**Figure 5.** Screenshot of the EchoVideo media player with the cursor pointing to the **CC** (closed captions) switch.

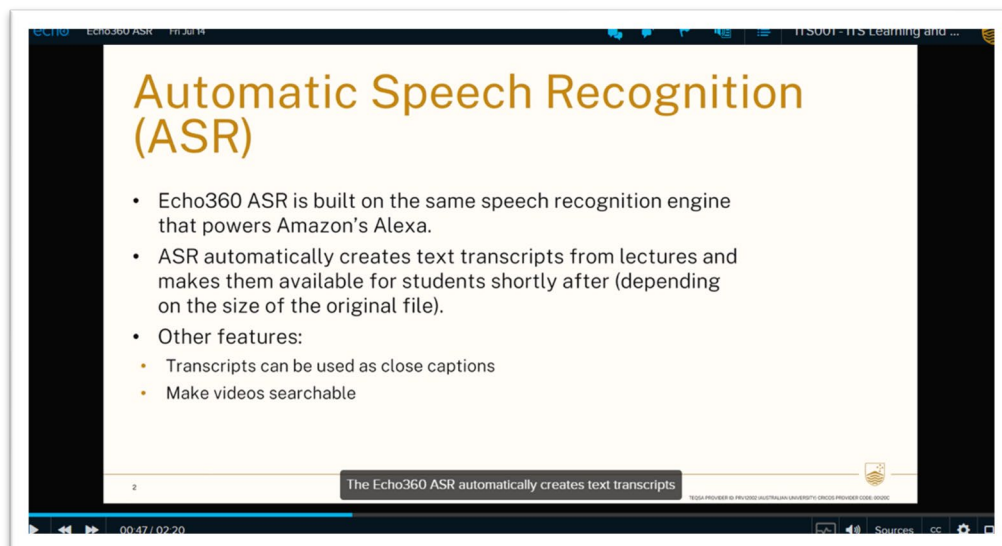
## Optional settings

7. Customize caption settings to suit your preferences. You can adjust the caption size, colour, background, and position. Explore these settings to enhance your caption-viewing experience.



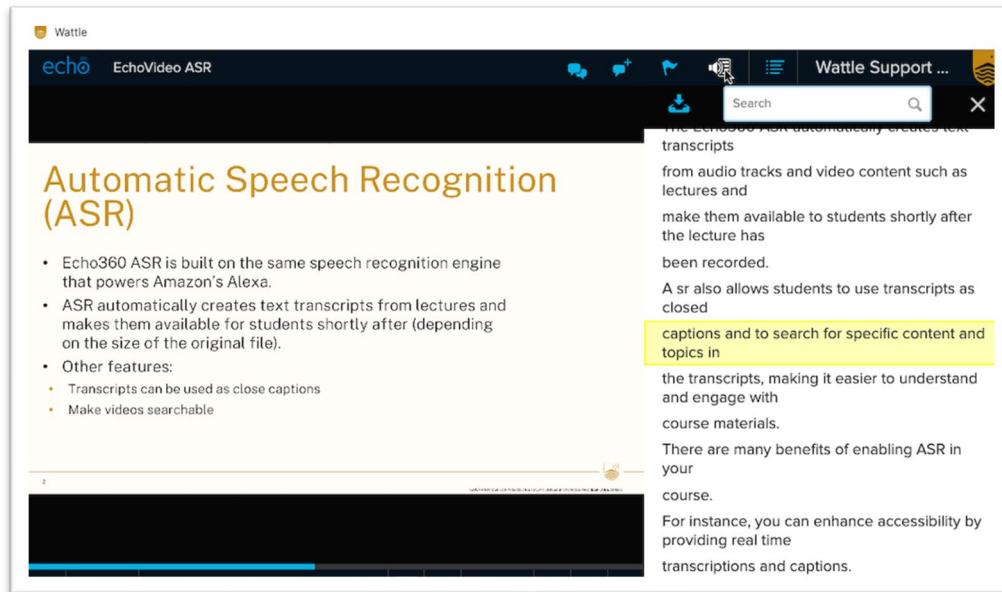
**Figure 6.** Screenshot of the EchoVideo media player zooming into the CC settings. The settings are Font size, Contrast, Location, and Alignment.

8. Start playing the video. You should now see the captions on the video player, synchronised with the spoken content. The captions will help you follow along and understand the video better.



**Figure 7.** Screenshot of the EchoVideo media player with captions and video synchronised. Closed captions are displayed at the bottom of the video.

9. Alternatively, you may prefer to view the text in the Transcript Viewer, which you can display by clicking the **Transcript** button.



**Figure 8.** Screenshot of the EchoVideo media player with transcript and video synchronised. Transcript search bar displayed at the top.

As you watch the video with the transcript or captions, take advantage of them to enhance your learning experience. The text can help clarify unfamiliar terms, reinforce important points, and ensure you don't miss any information presented in the video. Using the Search tool in the transcript can help you skip instantly to a part of the lecture you want to re-watch, as a click in the transcript will take you immediately to the related part of the recording.

Note: Please be aware that automated transcripts and captions are not 100% accurate as they are not checked nor corrected by default. As such, students cannot rely on the transcripts alone and need to attend and/or watch each lecture to ensure they understand the concepts presented in classes. As inaccuracies in the transcripts are expected, there cannot be any consideration for assessment re-mark/extension if they cause confusion.

### Need help

If you need further assistance with EchoVideo, please submit a ticket with the [IT Service Desk](#) (opens the IT Service Desk).

AUTHOR: Bruna Pretero, Digital Accessibility, ITS

DATE WRITTEN: 21 July 2023

REVIEWERS: Jenny Edwards, CLT, Katherine Kwan, LSSG

DATE REVIEWED: 21 July 2023